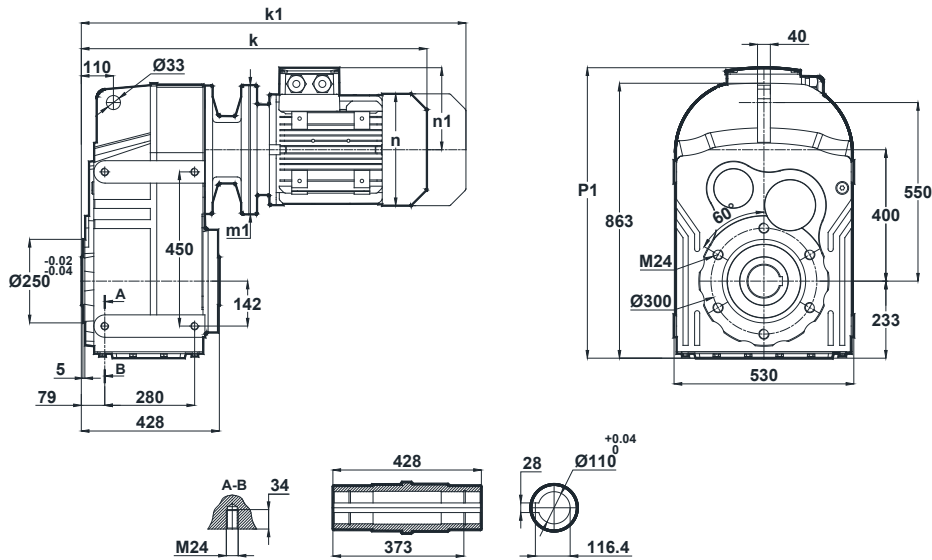


# DV872 + DV873 - Flachgetriebemotor / Parallel shaft geared motor

Tapped center hole according to DIN 332, sheet 2 / Zentrierung mit Gewinde nach DIN 332, Blatt 2

DV872.00

DV873.00

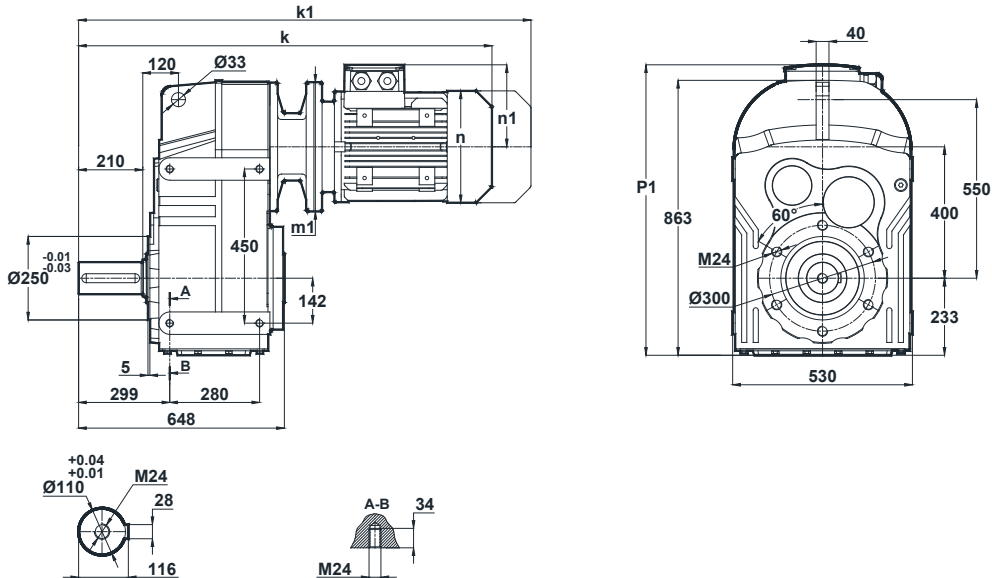


	132S/B5	132M/B5	160M/B5	160L/B5	180M/B5	180L/B5	200L/B5	225S/B5	225M/B5	250M/B5	280S/B5	280M/B5
<b>k</b>	872	872	1097	1097	1186	1186	1224	1257	1282	1358	1420	1420
<b>k1</b>	1002	1002	1277	1277	1356.5	1356.5	1410.5	1422	1447	1528.5	1593	1599
<b>n / n1</b>	257 / 179	257 / 179	315 / 219	315 / 219	347 / 234	347 / 234	390 / 275	434 / 285	434 / 285	480 / 322	544 / 350	544 / 350
<b>m1 (B5)</b>	300	300	350	350	350	350	400	450	450	550	550	550
<b>m1 (B14)</b>	200	200	-	-	-	-	-	-	-	-	-	-
<b>p1</b>	-	-	-	-	877	877	908	918	918	955	983	983

Poz.4

DV872.01

DV873.01



	132S/B5	132M/B5	160M/B5	160L/B5	180M/B5	180L/B5	200L/B5	225S/B5	225M/B5	250M/B5	280S/B5	280M/B5
<b>k</b>	1092	1092	1317	1317	1406	1406	1444	1477	1502	1578	1640	1640
<b>k1</b>	1222	1222	1497	1497	1576.5	1576.5	1630.5	1642	1667	1748.5	1813	1819
<b>n / n1</b>	257 / 179	257 / 179	315 / 219	315 / 219	347 / 234	347 / 234	390 / 275	434 / 285	434 / 285	480 / 322	544 / 350	544 / 350
<b>m1 (B5)</b>	300	300	350	350	350	350	400	450	450	550	550	550
<b>m1 (B14)</b>	200	200	-	-	-	-	-	-	-	-	-	-
<b>p1</b>	-	-	-	-	877	877	908	918	918	955	983	983

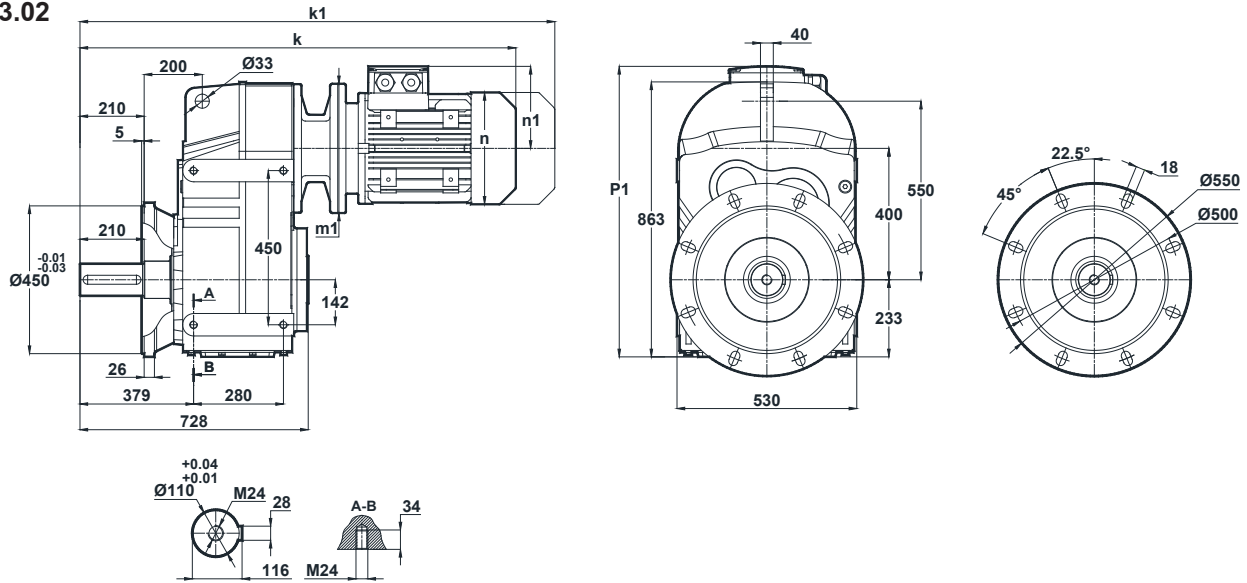
Dimensions "k1" is for motors with brake.  
Maße "k1" ist für Bremsenmotoren.

# DV872 + DV873 - Flachgetriebemotor / Parallel shaft geared motor

Tapped center hole according to DIN 332, sheet 2 / Zentrierung mit Gewinde nach DIN 332, Blatt 2

DV872.02

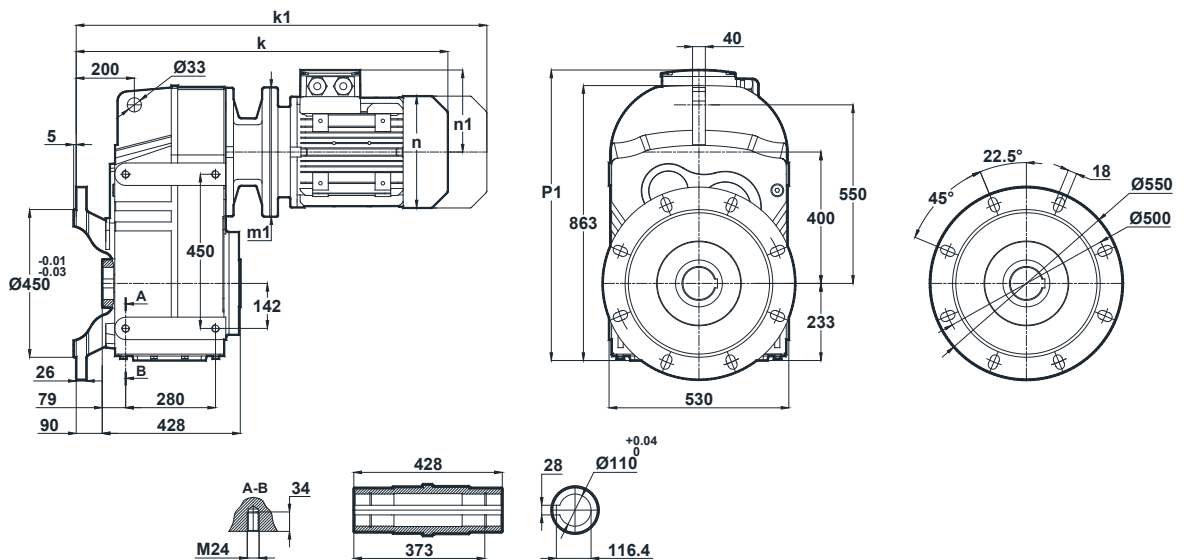
DV873.02



	132S/B5	132M/B5	160M/B5	160L/B5	180M/B5	180L/B5	200L/B5	225S/B5	225M/B5	250M/B5	280S/B5	280M/B5
k	1172	1172	1397	1397	1486	1486	1524	1557	1582	1658	1720	1720
k1	1302	1302	1577	1577	1656.5	1656.5	1710.5	1722	1747	1828.5	1893	1899
n / n1	257 / 179	257 / 179	315 / 219	315 / 219	347 / 234	347 / 234	390 / 275	434 / 285	434 / 285	480 / 322	544 / 350	544 / 350
m1 (B5)	300	300	350	350	350	350	400	450	450	550	550	550
m1 (B14)	200	200	-	-	-	-	-	-	-	-	-	-
p1	-	-	-	-	877	877	908	918	918	955	983	983

DV872.03

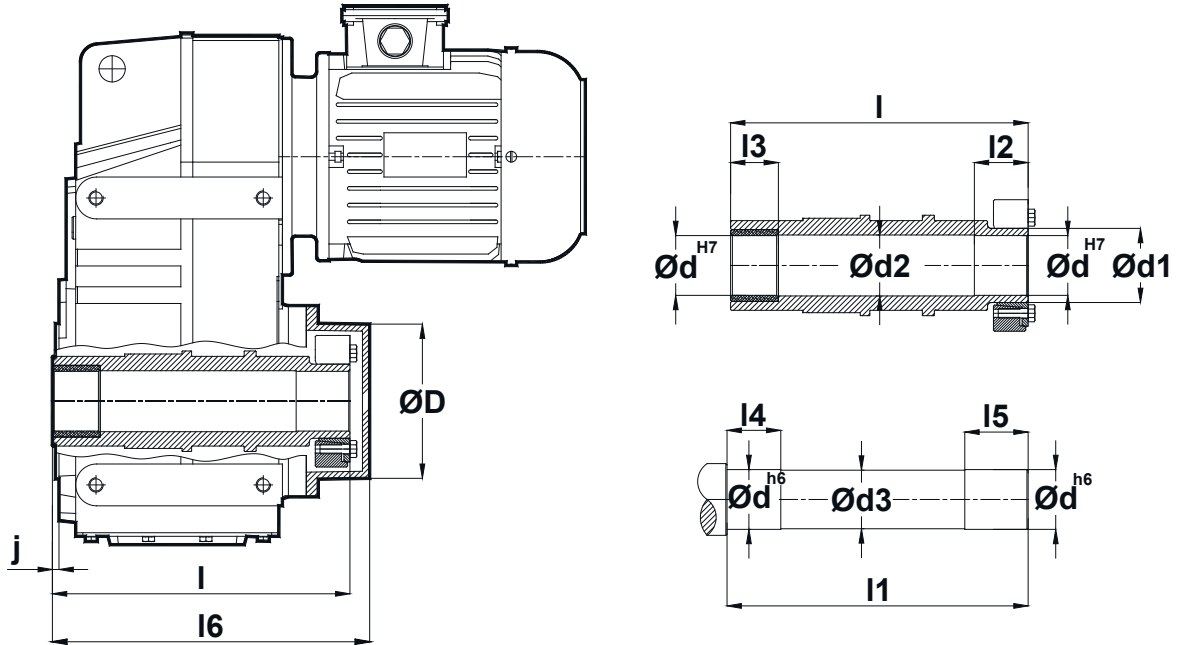
DV873.03



	132S/B5	132M/B5	160M/B5	160L/B5	180M/B5	180L/B5	200L/B5	225S/B5	225M/B5	250M/B5	280S/B5	280M/B5
k	962	962	1187	1187	1276	1276	1314	1347	1372	1448	1510	1510
k1	1092	1092	1367	1367	1446.5	1446.5	1500.5	1512	1537	1618.5	1683	1689
n / n1	257 / 179	257 / 179	315 / 219	315 / 219	347 / 234	347 / 234	390 / 275	434 / 285	434 / 285	480 / 322	544 / 350	544 / 350
m1 (B5)	300	300	350	350	350	350	400	450	450	550	550	550
m1 (B14)	200	200	-	-	-	-	-	-	-	-	-	-
p1	-	-	-	-	877	877	908	918	918	955	983	983

imensions "k1" is for motors with brake.  
Maße "k1" ist für Bremsenmotoren.

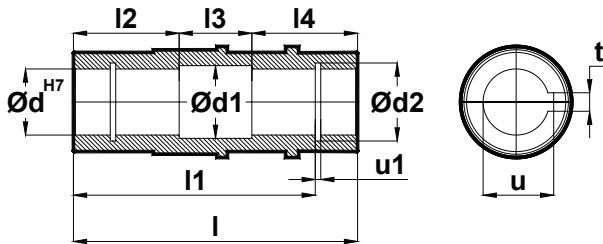
# D- SERIE HOHLWELLE MIT SCHRUMPFSCHEIBE D- SERIES HOLLOW SHAFT WITH SHRINK DISC CONNECTOR



Typi Type Typ	ØD	Ød	Ød1	Ød2	Ød3	l	l1	l2	l3	l4	l5	l6	j	M	Z	Ta[Nm]
<b>D.17..0S</b>	85	30	38	31	29	146	149	30	20	25	38	162	4	M8	5	30
<b>D.27.. 0S</b>	94	35	44	36	34	186	189	35	25	30	43	201	4.5	M8	6	30
<b>D.28.. 0S</b>	104	40	50	41	39	197	200	35	30	35	43	213	5	M8	8	30
<b>D.37.. 0S</b>	106	40	50	41	39	216	219	40	35	40	48	232	6	M8	8	30
<b>D.47.. 0S</b>	129	50	62	51	49	249	252	45	40	45	53	266	5.5	M8	9	30
<b>D.57.. 0S</b>	159	60	75	61	59	282	285	50	45	50	58	305	5.5	M10	10	59
<b>D.67.. 0S</b>	164	70	80	71	69	345	348	55	50	55	63	366	6	M10	10	59
<b>D.77.. 0S</b>	204	80	110	91	89	418	421	70	60	70	83	440	7.5	M12	12	100
<b>D.87.. 0S</b>	252	110	130	111	109	492	495	80	70	80	93	519	9	M14	9	160
<b>D.97.. 0S</b>	288	120	155	121	119	570	573	90	80	90	103	593	10	M14	10	160

M: Bolt dimension / Muttergröße  
 Z: Bolt Quantity / Anzahl von Muttern  
 Ta: Tightening Torque / Schrumpfmoment

## Hohlwellenabmessungen von D- Serie Getrieben Hollow Shaft Dimensions for D- Series Gearboxes



Tip Type Typ	d	d1	d2	l	l1	l2	l3	l4	u1	t	u
D.17..	30	31	31.4	120	105	45	30	45	1.3	8	33.3
D.27..	35	36	37	157	132	60	37	60	1.6	10	38.3
D.28..	40	41	42.5	166	142	64	38	64	1.85	12	43.3
D.37..	40	41	42.5	185	156	70	45	70	1.85	12	43.3
D.47..	50	51	53	215	183	82	51	82	2.15	14	53.8
D.57..	60	61	63	246	210	96	54	96	2.15	18	64.4
D.67..	70	71	73	308	270	110	88	110	2.65	20	74.9
D.77..	90	91	93.5	363	313	135	93	135	3.15	25	95.4
D.87..	110	111	114	428	373	160	108	160	4.15	28	116.4
D.97..	120	121	124	500	460	180	140	180	4.15	32	127.4

## Drehmomentstütze- Montagezeichnungen Torque Arm- Mounting details

